

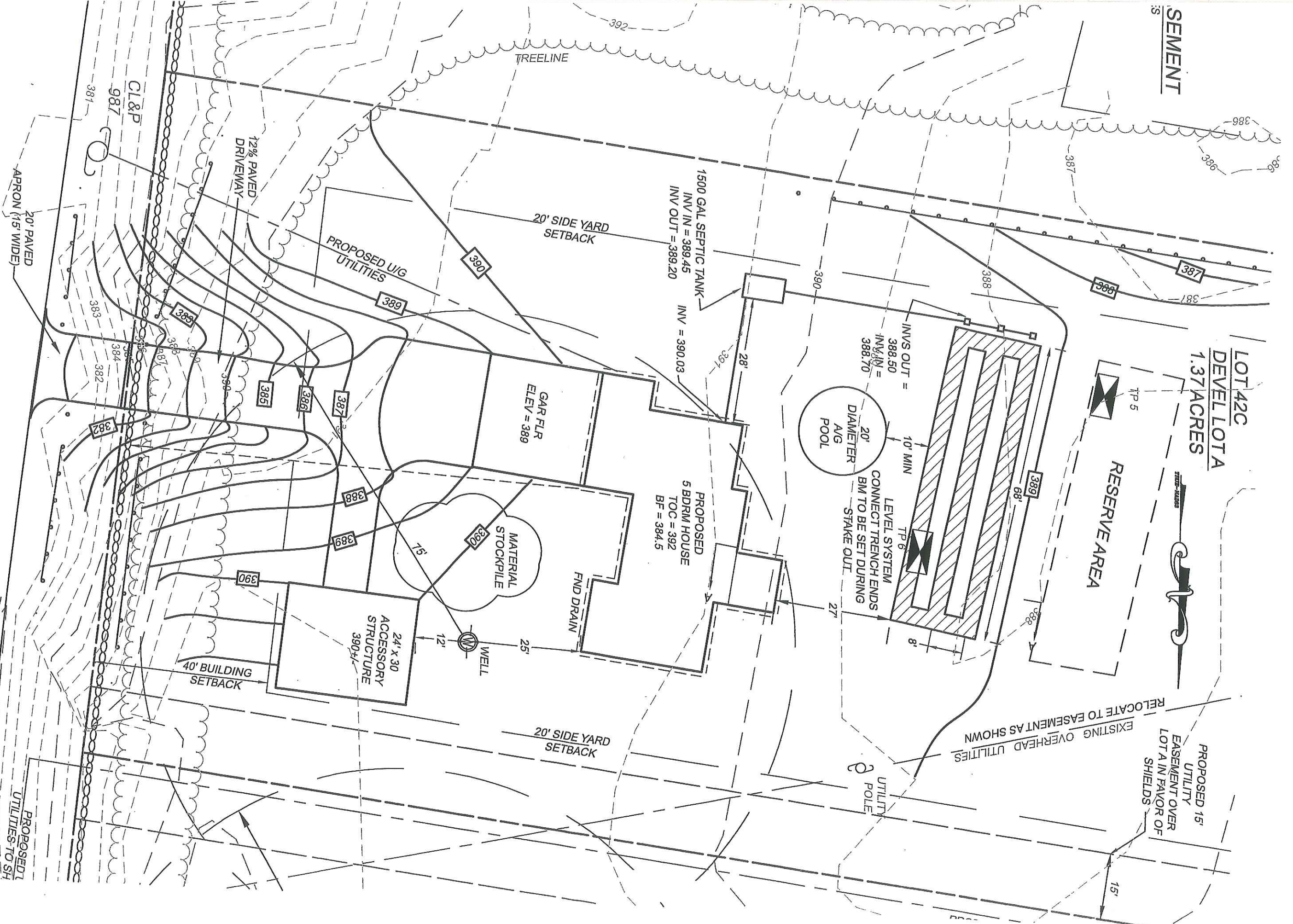
SEMENT

LOT 42C
DEVELLOTA
1.37 ACRES

RESERVE AREA

PROPOSED 15'
UTILITY
EASEMENT OVER
LOT 41A IN FAVOR OF
SHIELDS

EXISTING OVERHEAD UTILITIES
RELOCATE TO EASEMENT AS SHOWN



SITE PLAN
1" = 20'

Mike & Karen Barch
622 Fabyard
PZC M19 2-22-2021
12. New Business #a