



Team CE 16 Presents:

Thompson, CT Pop-Up Vendor Village

Stephanie Kreidler ▢ Anaka Maher ▢ Susie Moon Monda ▢ Daniel Rodier

Department of Civil and Environmental Engineering

UConn
SCHOOL OF ENGINEERING

Introduction

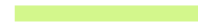


Goals

- △ Design 10 chalets to host local businesses
- △ Suggest site layout modifications
- △ Propose additional amenities



Existing Conditions



Site Locations and Layout

Site Location



Current Site Situation



Existing Site Entrance

Entrance to the park intersects Main Street and Route 12



Design Alternatives

Preliminary Layouts

Analysis of Design Alternatives

Preliminary Design Renderings



Alternative Layout Suggestions

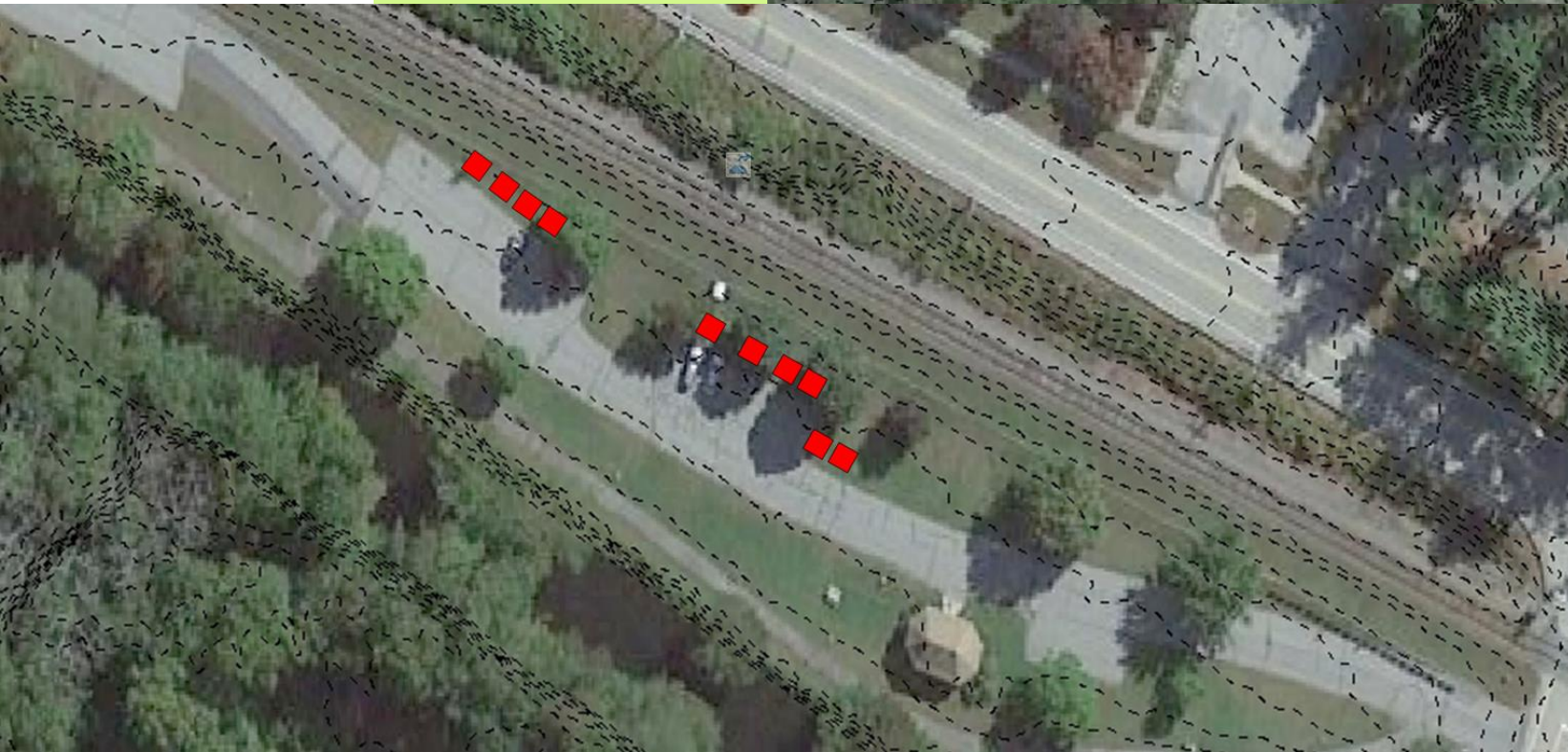
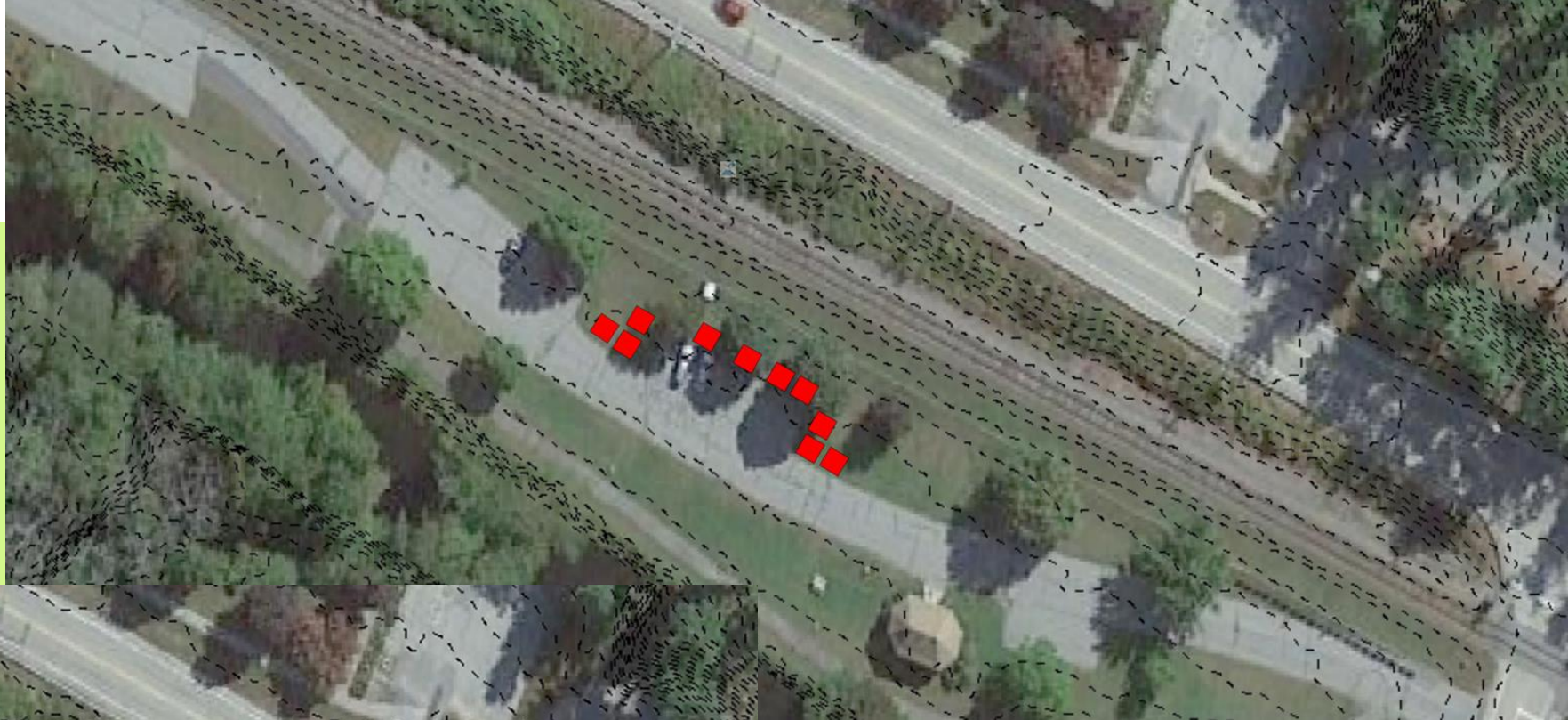


Final Design

Proposed Layouts and Façades

Chalet Layouts

Layout Option 1



Layout Option 2

Crosswalk Addition

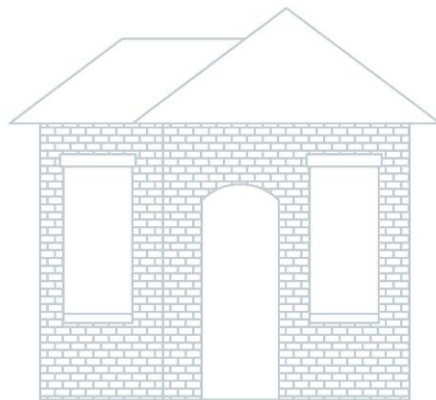




**Thompson Hill
Old Bank**



**Quaddick
Bowen's Tavern**



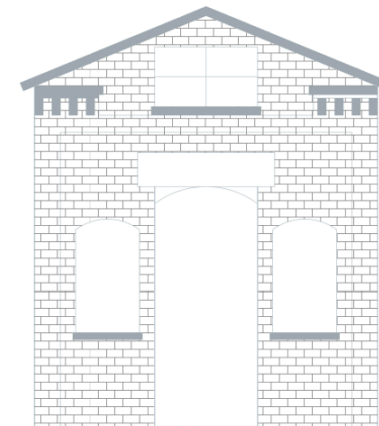
**Grosvenordale
Belding's Guard
Building**



**Wilsonville
Keegan Mill**



**Fabyan
Pepin's Store**



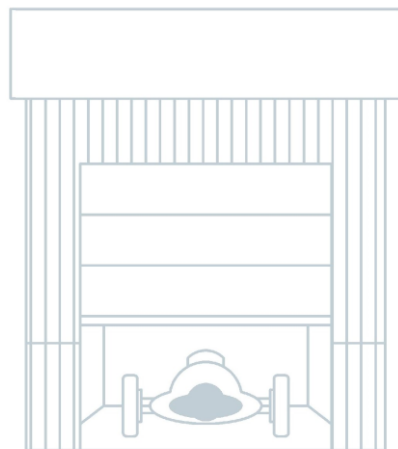
**Mechanicsville
Kenney Store**



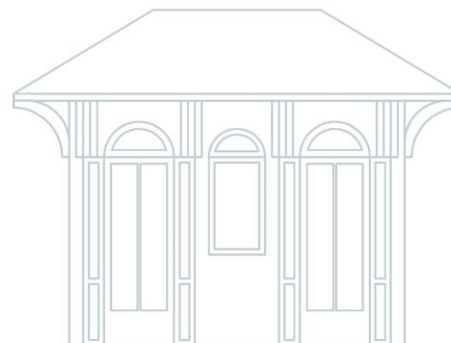
**North Grosvenordale
Hose House**



**West Thompson
Sacred Heart Church**



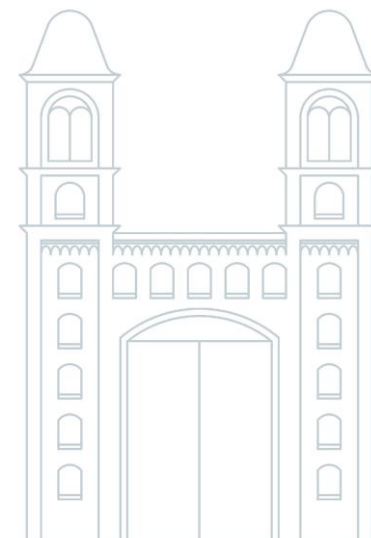
**East Thompson
Speedway**



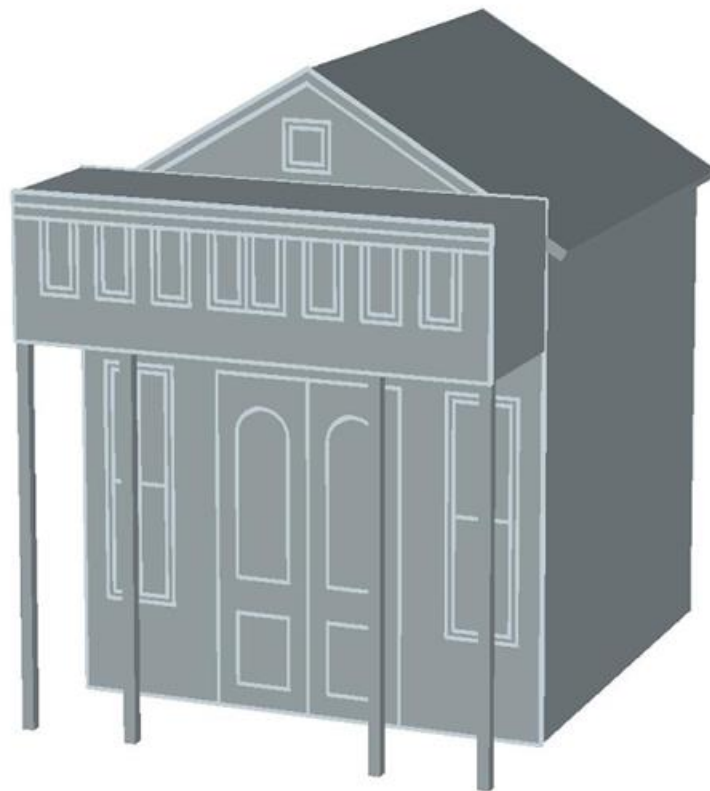
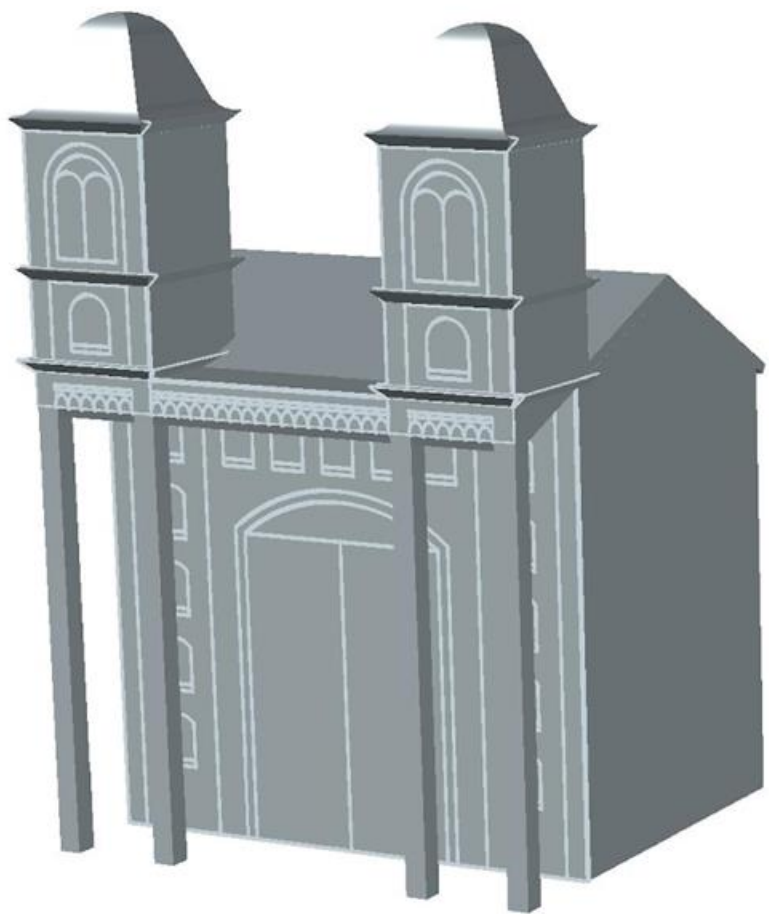
**Quinebaug
Railroad Station**



**Mechanicville
Schoolhouse**



**North Grosvenordale
Mill**



3D Renderings

visual aid for overhangs



Thank you