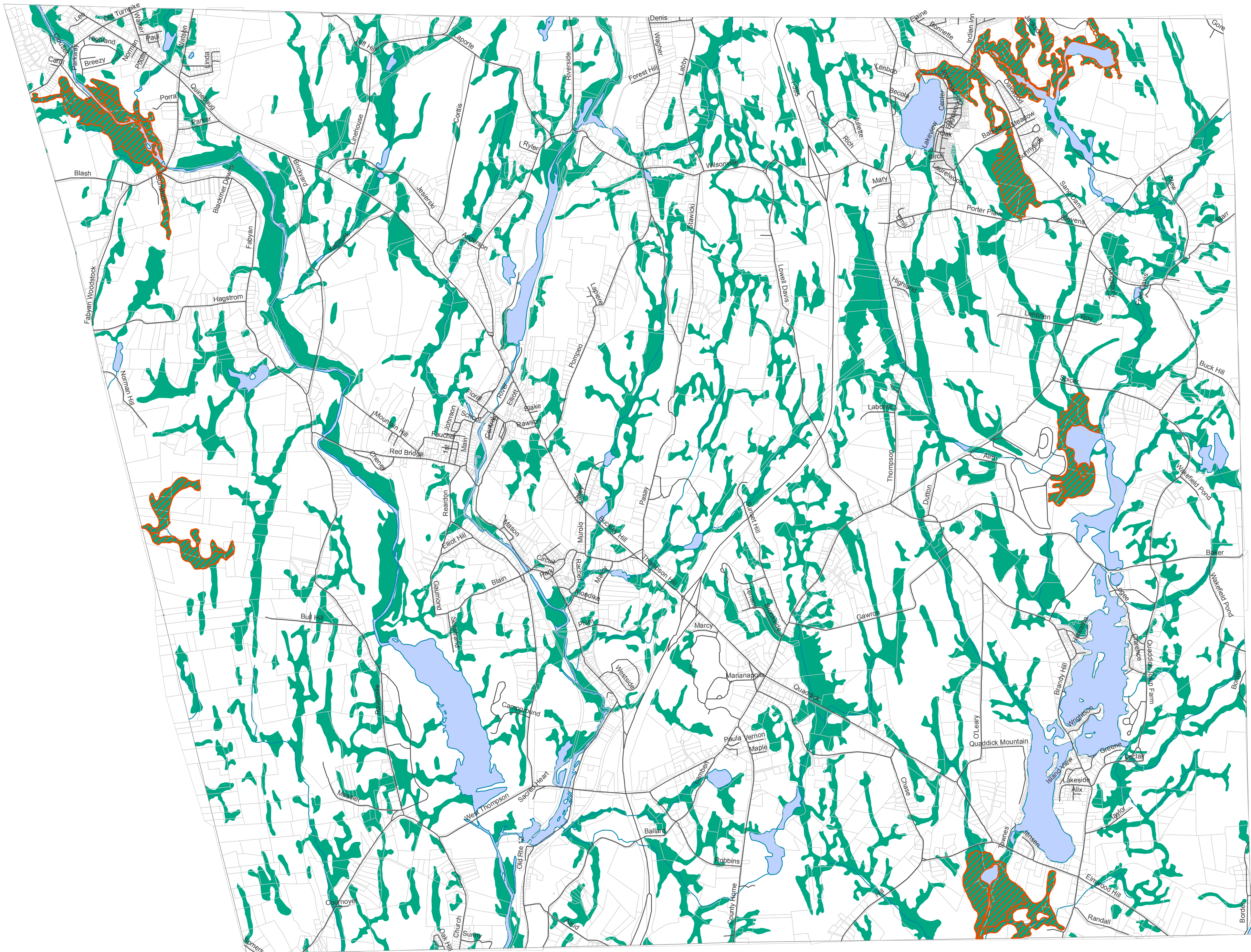

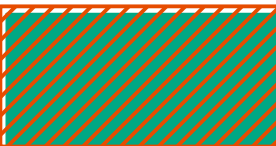
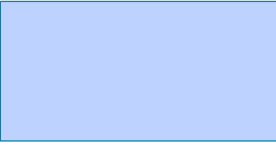



Inland Wetlands & Watercourses Map

Thompson, Connecticut

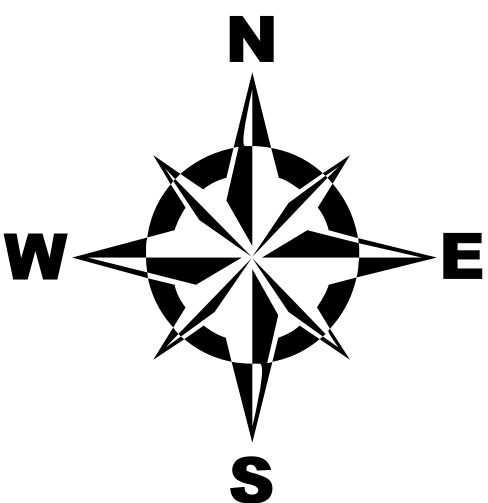


Legend

-  Inland Wetlands
-  Significant Wetlands
-  Waterbodies
-  Parcels

This map delineates the general location and boundaries of inland wetlands and the general location of watercourses. In all cases, the precise location of regulated areas shall be determined by the actual character of the land, the distribution of wetland soil types and locations of watercourses. Final determination of wetlands will be made by a certified soil scientist.

Significant Wetlands refers to the ten (10) most noteworthy wetlands and watercourses identified in the TOWN OF THOMPSON INLAND WETLAND INVENTORY prepared by Northeastern Connecticut Regional Planning Agency 1980 pages 9, 14 and 15.



DATA SOURCES
Inland Wetlands & Waterbodies: CT DEP GIS data, 2005.
Significant Wetlands: extracted from CT DEP Environmental GIS Data, 2003 ed. based upon the Town of Thompson Inland Wetlands Inventory, publ. by Northeastern CT Regional Planning Agency, 1980.
Parcels: database generated by Applied Geographics, Inc. based upon Assessor's Official Maps, October 2008.

Connecticut State Plane Coordinate System of 1983
Lambert Conformal Conic Projection
North American Datum of 1983