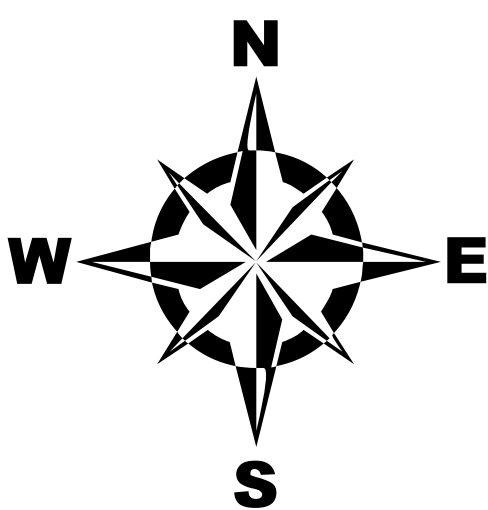
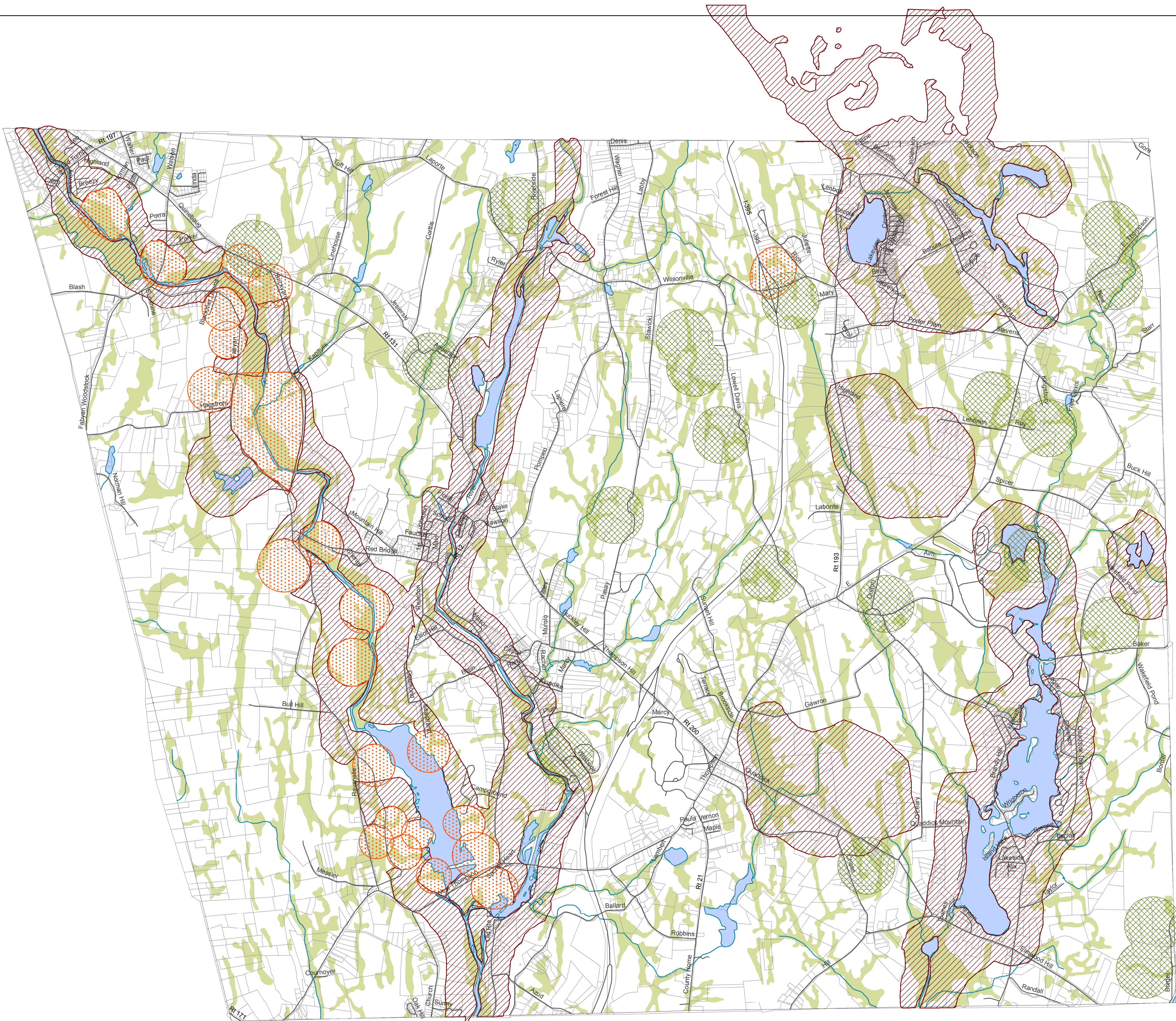
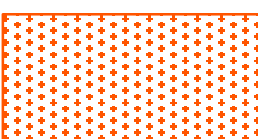
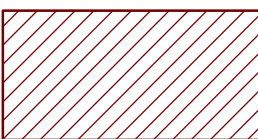
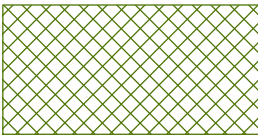

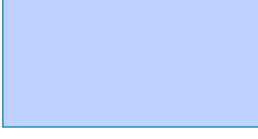




Archaeological Resources

Thompson, Connecticut



Legend

-  Archeological Sites
-  Archeol Sensiv Areas
-  Local Signif Sites
-  Parcels
-  Waterbodies
-  Inland Wetlands
-  Roads

Archaeological Sites and Sensitive Areas were identified by the CT State Archaeologist.
The Locally Significant Historic Archaeological Sites were identified and are valued by native people, local residents and antiquities enthusiasts.
The actual sites are located within the buffered "sites."

DATA SOURCES
Inland Wetlands & Waterbodies: CT DEP GIS data, 2005.
Parcels: database generated by Applied Geographics, Inc. based upon Assessor's Official Maps, October 2008.
Archaeological Sites and Sensitive Areas: identified by CT ST Archaeologist and digitized by the Conservation Commission 2005
Local Signif Sites digitized by Conservation Commission 2005

Connecticut State Plane Coordinate System of 1983
Lambert Conformal Conic Projection
North American Datum of 1983